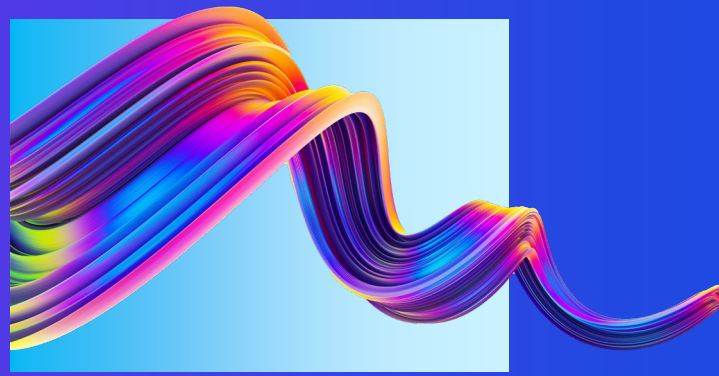


# Trust & Corporate Service Providers

## KPMG in the Crown Dependencies



KPMG's tax and advisory teams work extensively within the Fiduciary Sector assisting TCSPs with issues impacting their business directly and assisting their underlying clients. We combine exceptional people with an innovative mindset and technological investment to provide solutions that help your business and your clients maximise opportunities and manage risks and challenges appropriately.

The Tax team acts as a gateway to KPMG's international community so as well as the services we offer locally, we have significant experience in delivering cross border international tax advice and working with our colleagues and clients around the world who are seeking to set structures up in our Islands.

Our Advisory team combines a global mindset and local experience with superior analytical tools to help clients navigate the complex challenges they face as business leaders and owners.

## Tax



Tax compliance and advisory for Individuals, Trusts, Companies, Foundations and Partnerships.



UK, US and International tax compliance and advisory services for locally established and administered businesses utilizing our international network.



Tax advisory services relating to Economic Substance and other international initiatives.



Tax risk awareness for offshore structures and assisting businesses with the creation and implementation of an appropriate tax risk framework.



Structural health checks including advising on remediation strategies and assisting with disclosures to the appropriate tax authority.



Reporting and advisory services in respect of FATCA/CRS.



Tax planning and restructuring for family planning and private wealth structures.



VAT services in relation to luxury assets, real estate holding structures, trading businesses and deals.



Managed services, working with TCSPs to act as your tax team providing local compliance, accounts preparation and FATCA/CRS support.

## Advisory Services

Financial, taxation, regulatory and IT Due Diligence in relation to corporate acquisitions or disposals.



Reporting accountant services in relation to IPOs and public fund raising.



Mergers & Acquisitions lead advisory assisting with corporate disposals and acquisitions.



Governance, Risk and Compliance.



ESG advisory services including advising on ESG strategy, reporting and sustainability.



## Did you know ... ?



Our Advisory team conducts an annual survey of TCSP companies in Jersey and Guernsey that allows market participants to benchmark themselves against each other on a number of key performance indicators.

# Services for your clients

The taxation of individuals, trusts and companies is constantly evolving, both locally and globally. Changes in law, practice or in the approach of tax authorities across the globe can have major ramifications. KPMG Island Group's tax professionals understand the ever-changing and challenging business and tax environment that TCSPs operate in.

Our tax team can broadly be split into Family Office & Private Client, Corporate & International and Operational & Indirect Taxes. Each team operates as one across the Crown Dependencies and shares the same values and commitment to excellence and client service.



## Family Office and Private Client

- Local tax advisory and compliance services.
- UK and US tax compliance and advisory services for local individuals and structures established and administered in our Islands.
- International tax advisory and compliance services utilizing our global network.
- Tax investigations, enquiries and disclosures to tax authorities.
- Reviewing, simplifying and unwinding structures.
- Tax health checks.
- Residence and domicile reviews for settlors and beneficiaries.
- Training for TCSP staff on key tax matters, tax risk awareness for offshore trusts and companies and other areas of interest/concern.
- Employment tax issues such as share schemes, benefits in kind, payroll and global mobility.
- Key family office themes (governance, philanthropy, diversity, succession, legacy).



## Corporate and International

- Local corporate tax advisory and compliance services, including specialist tax compliance services for regulated business entities.
- Advisory and compliance services with regard to the Economic Substance Requirements, including liaising with local tax authorities, general updates, training and implementation of the KPMG Economic Substance Tool to provide a live, on-site assessment of an entity's exposure to the Requirements.
- UK corporation tax advisory and compliance services for local clients.
- International tax advisory and compliance services utilizing our global network.
- International developments, including OECD Pillars 1 & 2 and proposed changes to the EU blacklisting process.
- US tax reporting for funds and other US tax matters for corporates and trust structures.



## Operational and Indirect taxes

- Automatic Exchange of Information (AEOI) including CRS and FATCA reporting and training.
- Implementing our Global KPMG AEOI Reporting Tool.
- VAT/GST advisory and compliance services.
- Aircraft/ yachting VAT/GST matters in the wake of Brexit.
- Online Gaming, including assisting with VAT structuring, registration applications and reviewing service agreements.
- VAT/GST compliance and resolving issues e.g. failing to register.
- Support with tax authority investigations and enquiries.

# Contacts

## Corporate and International



**Tony Mancini**  
Head of Tax  
Guernsey  
+44 (0) 1481 741845  
[amancini@kpmg.com](mailto:amancini@kpmg.com)



**Paul Eastwood**  
Partner  
Jersey  
+44 (0) 1534 608433  
[peastwood@kpmg.com](mailto:peastwood@kpmg.com)



**Robert Rotherham**  
Partner  
Isle of Man  
+44 (0) 1624 681035  
[rrotherham@kpmg.co.im](mailto:rrotherham@kpmg.co.im)



**Sarah Graham**  
Senior Manager  
Jersey  
+44 (0) 1534 632500  
[sarahgraham@kpmg.com](mailto:sarahgraham@kpmg.com)



**Georgia Kenyon**  
Senior Manager  
Isle of Man  
+44 (0) 1624 681023  
[gkenyon@kpmg.co.im](mailto:gkenyon@kpmg.co.im)



**Matt Thomas**  
Senior Manager  
Guernsey  
+44 (0) 1481 741837  
[matthewthomas@kpmg.com](mailto:matthewthomas@kpmg.com)

## Family Office and Private Client



**Paul Beale**  
Head of Family Office  
and Private Client  
Guernsey  
+44 (0) 1481 755798  
[paulbeale@kpmg.com](mailto:paulbeale@kpmg.com)



**Justine Howard**  
Associate Director  
Isle of Man  
+44 (0) 1624 681062  
[jhoward@kpmg.co.im](mailto:jhoward@kpmg.co.im)



**Harry Malet de Carteret**  
Senior Manager  
Jersey  
+44 (0) 1534 632566  
[hmaletdecarteret@kpmg.com](mailto:hmaletdecarteret@kpmg.com)



**Joseph Milward**  
Manager  
Guernsey  
+44 (0) 1481 755719  
[jmilward@kpmg.com](mailto:jmilward@kpmg.com)

## Operational and Indirect Taxes



**Phil Morris**  
Head of VAT  
Isle of Man  
+44 (0) 1624 681000  
[philipmorris1@kpmg.co.im](mailto:philipmorris1@kpmg.co.im)



**Clare Kelly**  
Senior Manager  
Isle of Man  
+44 (0) 1624 681079  
[clarekelly@kpmg.co.im](mailto:clarekelly@kpmg.co.im)



[kpmg.com/cds](https://kpmg.com/cds)

Some or all of the services described herein may not be permissible for KPMG audit clients and their affiliates or related entities.

The information contained herein is of a general nature and is not intended to address the circumstances of any particular individual or entity. Although we endeavour to provide accurate and timely information, there can be no guarantee that such information is accurate as of the date it is received or that it will continue to be accurate in the future. No one should act on such information without appropriate professional advice after a thorough examination of the particular situation.

© 2023 KPMG in the Crown Dependencies is the business name of a group of Jersey and Isle of Man limited liability entities each of which are member firms of the KPMG global organisation of independent member firms affiliated with KPMG International Limited, a private English company limited by guarantee. All rights reserved.

The KPMG name and logo are trademarks used under license by the independent member firms of the KPMG global organisation.